

## HQK45000 Serial/USB Communication Cable

### Windows 11 / Windows 10 PC driver installation manual

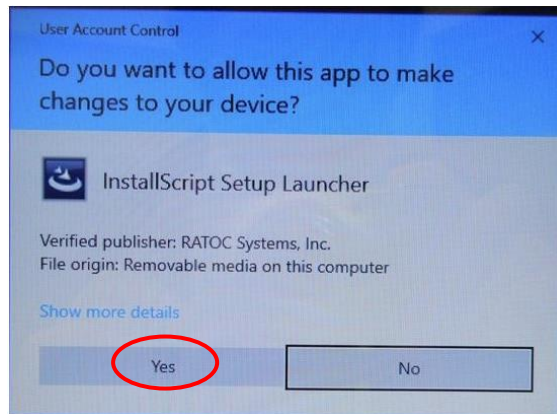
---

Jan. 20 / 2022  
NIKON-TRIMBLE CO., LTD.

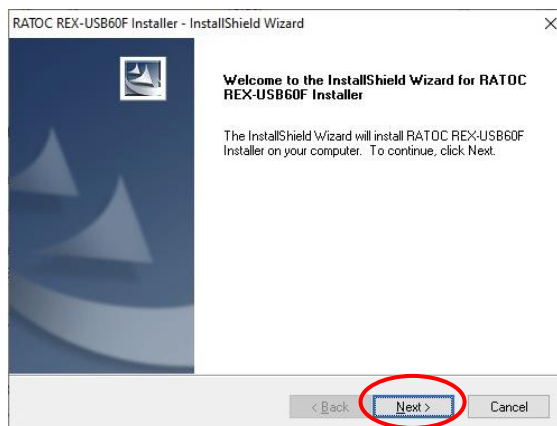
#### Installation on Windows 11 / Windows 10

For **Windows 11** and **Windows 10**, be sure to perform the setup operations shown below **before connecting the Serial/USB Communication Cable.**

Execute  
“USB60F\_11\_10\_Setup\_B039.  
exe” which was downloaded  
from the Spectrageospatial.com  
website.  
Click [Yes] in the “User Account  
Control” window.

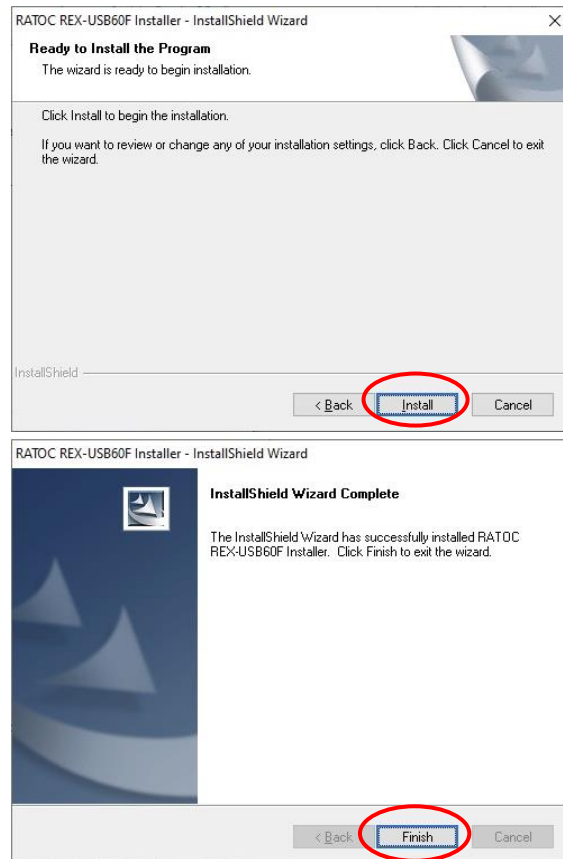


Click [Next >] in the “Welcome to the  
InstallShield Wizard .....”  
window.



Click [Install] in the “Ready to Install the Program” window.

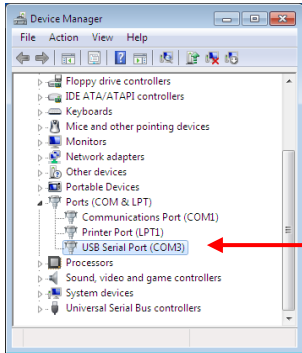
You have finished the setup operations.



Now, when you connect the Serial/USB Communication Cable, to the USB port on your computer the driver will be automatically installed.

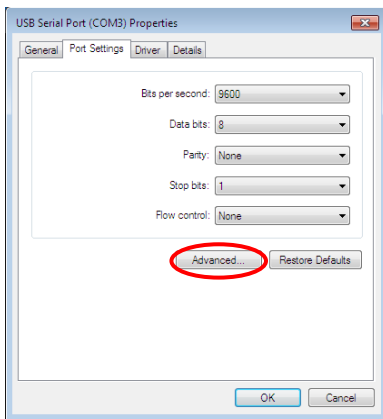
## Confirmation of Installation

To confirm that the driver has been installed successfully, open the Windows “Control Panel” app and select “Device Manager”.



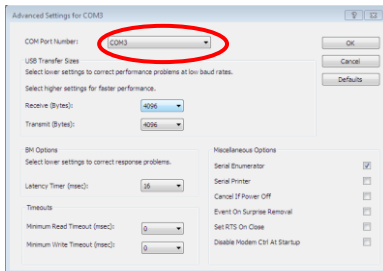
Under the “Ports (COM & LPT)” check that a “USB Serial Port (COMx)” entry has been added to the list. If so, the installation has been done successfully and the virtual COM port driver was added as a COM port.

The “x” shown in “USB Serial Port (COMx)” entry in the “Device Manager” list represents the COM port number allocated for the product.



If you wish to change the COM port number, double-click the “USB Serial Port (COMx)” entry. This opens the “USB Serial Port Properties” dialog.

Select the “Port Settings” tab in the window and click the [Advanced...] button.



In the “Advanced Settings for COMx” dialog use the “COM Port Number” pulldown to select the appropriate COM port to match the port where the cable is connected.