

HQK45000 Serial/USB Communication Cable

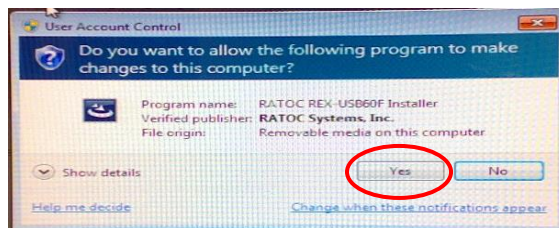
Windows 8 / Windows 7 PC driver installation manual

Jan. 20 / 2022
NIKON-TRIMBLE CO., LTD.

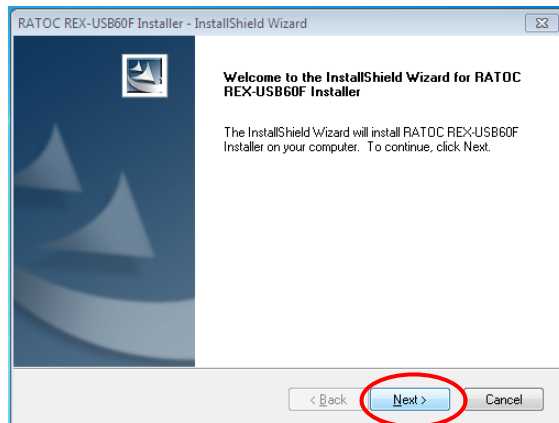
Installation on Windows 8 / Windows 7

For Windows 8 and Windows 7, be sure to perform the setup operations shown below **before connecting the Serial/USB Communication Cable.**

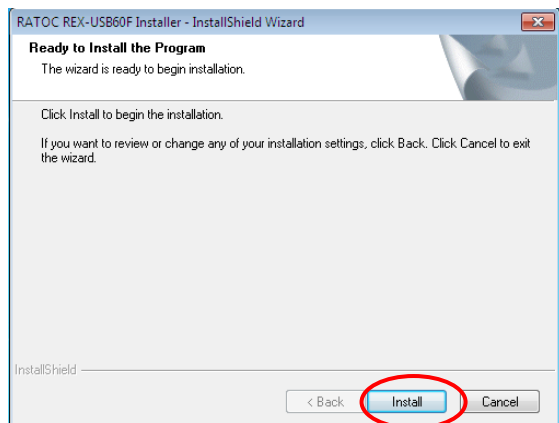
Execute
“USB60F_B039_Setup.exe.”
which was downloaded from the
Spectrageospatial.com website.
Click [Yes] in the “User Account
Control” window.



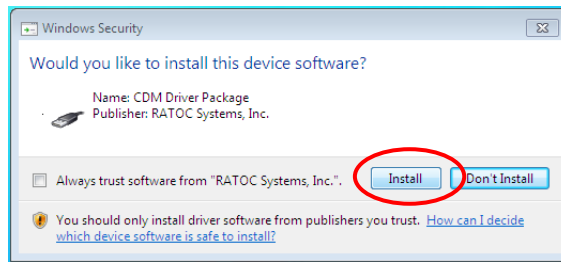
Click [Next >] in the “Welcome to
the InstallShield Wizard”
window.



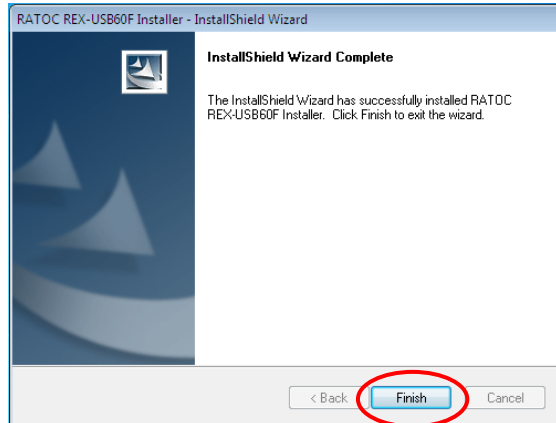
Click [Install] in the “Ready to
Install the Program” window.



Click [Install] in the “Would you like to install this device software?” window.
(Installation of USB-Serial Port)



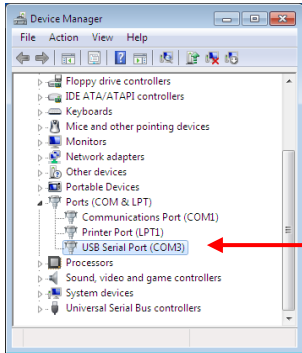
You have finished the setup operations.



Now when you connect the Serial/USB Communication Cable to the USB port on the PC, the driver will automatically install.

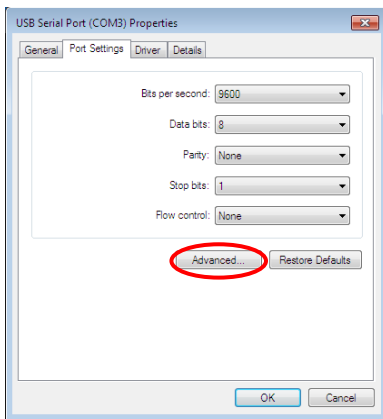
Confirmation of Installation

To confirm that the driver has been installed successfully, open the Windows “Control Panel” app and select “Device Manager”.



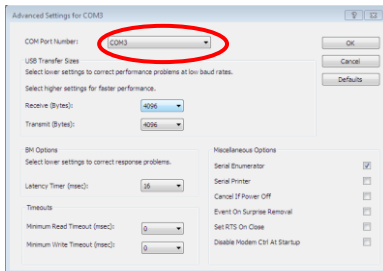
Under the “Ports (COM & LPT)” check that a “USB Serial Port (COMx)” entry has been added to the list. If so, the installation has been done successfully and the virtual COM port driver was added as a COM port.

The “x” shown in “USB Serial Port (COMx)” entry in the “Device Manager” list represents the COM port number allocated for the product.



If you wish to change the COM port number, double-click the “USB Serial Port (COMx)” entry. This opens the “USB Serial Port Properties” dialog.

Select the “Port Settings” tab in the window and click the [Advanced...] button.



In the “Advanced Settings for COMx” dialog use the “COM Port Number” pulldown to select the appropriate COM port to match the port where the cable is connected.